

BIG FOOT

MIDI-controller

USER'S MANUAL

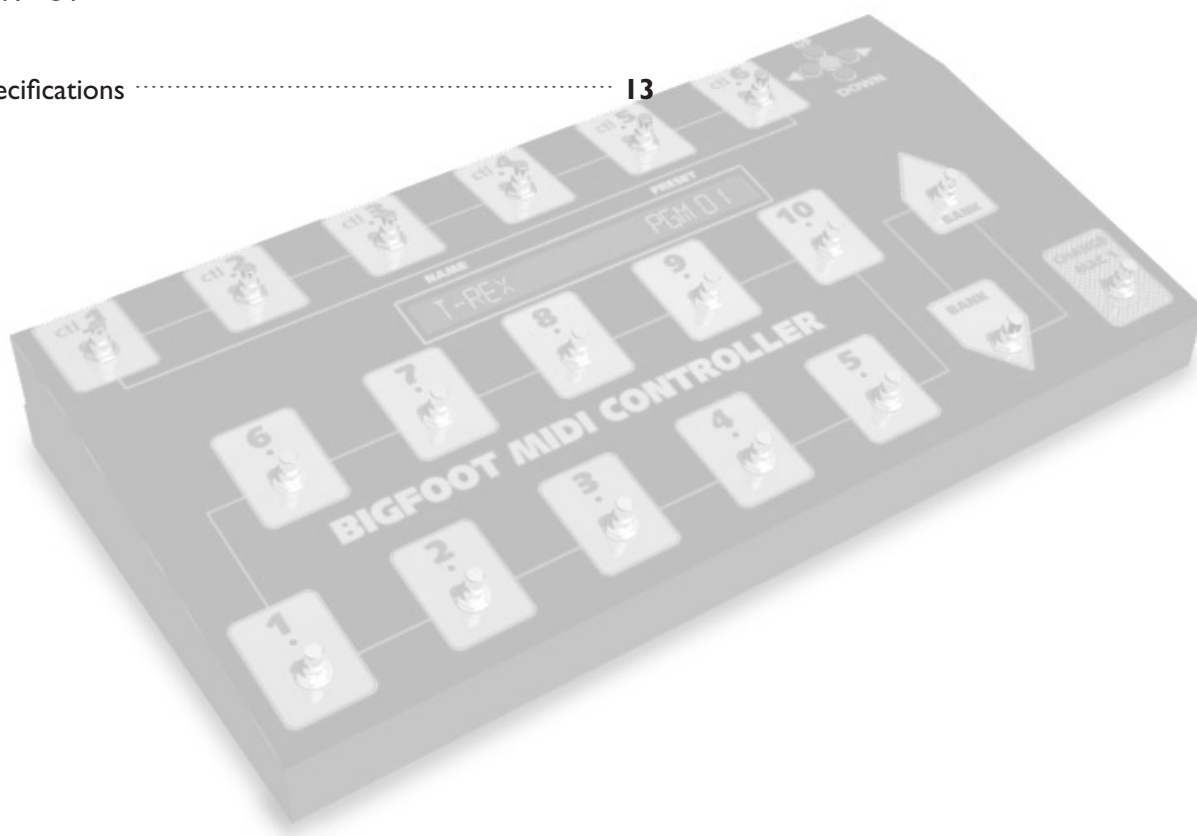


“ TAKE EFFECTS CONTROL A STEP FURTHER ”



Table of contents

Introduction	3
Front panel features	4
Rear panel features	5
Menustructure	6
How to program BIG FOOT	7
- Naming presets	
- Choosing MIDI channels	
- Connecting volume and expression pedals	
- Pedal type setup	
How to program the toggle switches	10
- Setting up control numbers	
- Setting up positions	
- Setting up MIDI active	
- Setting up LOOP mode	
Copying presets	12
Specifications	13



Welcome

Congratulations on the purchase of your new BIG FOOT MIDI-controller.

To ensure years of 100% reliable and trouble free use, please read this users manual very carefully.

T-Rex grants a 2-year warranty against defective parts or workmanship.
In the event of a defect, please contact the nearest T-Rex dealer.

BIG FOOT MIDI-controller can be used either as an ordinary MIDI-board, or as a Combo-board in co-operation with T-Rex MAC-1 MIDI-switcher.

Program changing, Channel switching, Loop-change and real time alterations.

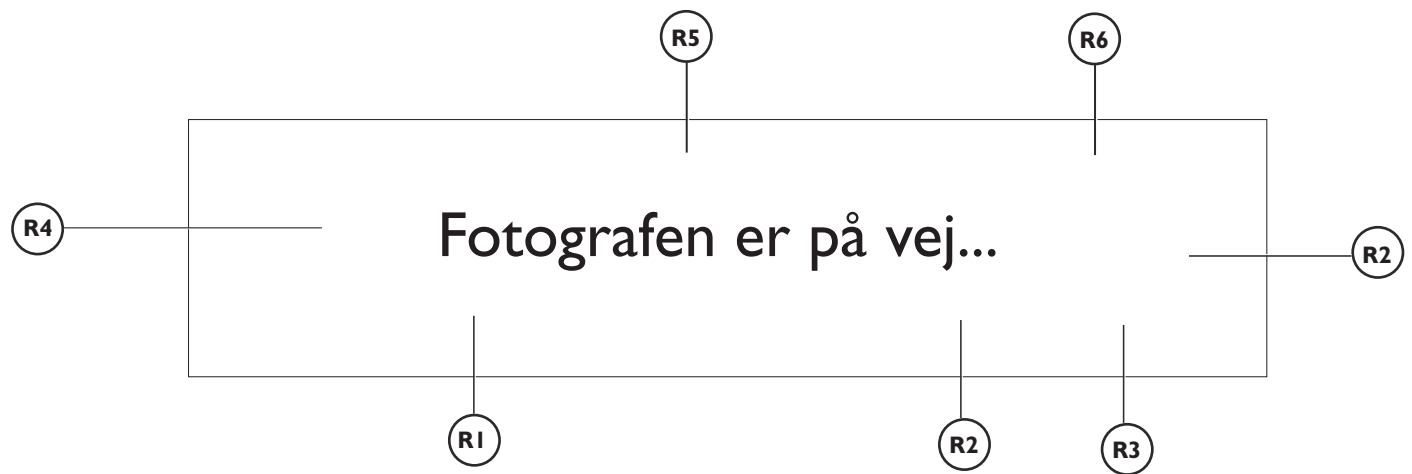
All these possibilities lie in the MIDI-language (serial data communication), which is primarily used in the music industry.

Frontpanel features



- F1) PRESETS:** When turned on, the BIG FOOT automatically starts up on program number 1.
BIG FOOT has 12 banks with 10 presets in every bank, thus providing you with 120 program-presets
- F2) BANK UP/BANK DOWN:** These switches allow for the selection of the preset banks 1 thru 12
- F3) CHANGE:** This switch provides the possibility of direct access to each individual loop of the MAC-I MIDI TO ANALOGUE CONTROLLER for easy real-time on/off-switching.
This feature only works in co-operation with the MAC-I.
The “Bank up” and “Bank down” function let’s you scroll up and down through your presets while in CHANGE mode.
- F4) DISPLAY:** The display has 16 characters and shows preset number/name (see naming presets)
- F5) CTLI-CTL-6:** Most new effects-devices allow for turning off/on effects blocks using a control-change command. BIG FOOT can be programmed to control these parameters.
- F6) PROGRAMMING KEYBOARD:** The keyboard has 5 switches: UP, DOWN, <, > and MENU.

Rearpanel features



R1) MAINS INPUT
(Power Supply):

The BIG FOOT contains an internal power transformer, and comes with a Power cord that should be connected to 230V-AC. Always be certain to turn off the device before plugging in the power cord. MIDI cables should also be connected before start-up.

R2) MIDI OUT jack:

As the BIG FOOT transmits and receives MIDI information simultaneously, a fully mounted 7-pin MIDI cable must be used. T-Rex Engineering provides an 8 meter 7 pin MIDI-cable with every BIG FOOT. If the length is not sufficient, please contact your dealer.

R3) Volume #7
(Expression pedal inlet):

This ¼" stereo jack allows for the connection of an expression pedal that solely controls the volume. T-Rex recommends Roland FV-200 expression pedals, as they are 100% reliable. Using a Roland expression-pedal EV-5 is an alternative option.

R4) EXPI and EXP2
(Expression pedal inlet):

These ¼" stereo jacks allows for the connection of a second and third expression pedal. These pedals control the so-called real-time-effects, e.g. delay-time, reverb-reflection etc.

NB:

As the expression pedal inlet is a stereo jack, a Y-cord is required for connecting the IN/OUT jacks from the Roland FV-200 pedal to the expression pedal inlet in the BIG FOOT.

R5) CTL I:

This ¼" mono jack allows for the connection of an external control switch. It is the ideal place to hook up a momentary type footswitch that lets you engage/disengage a function.

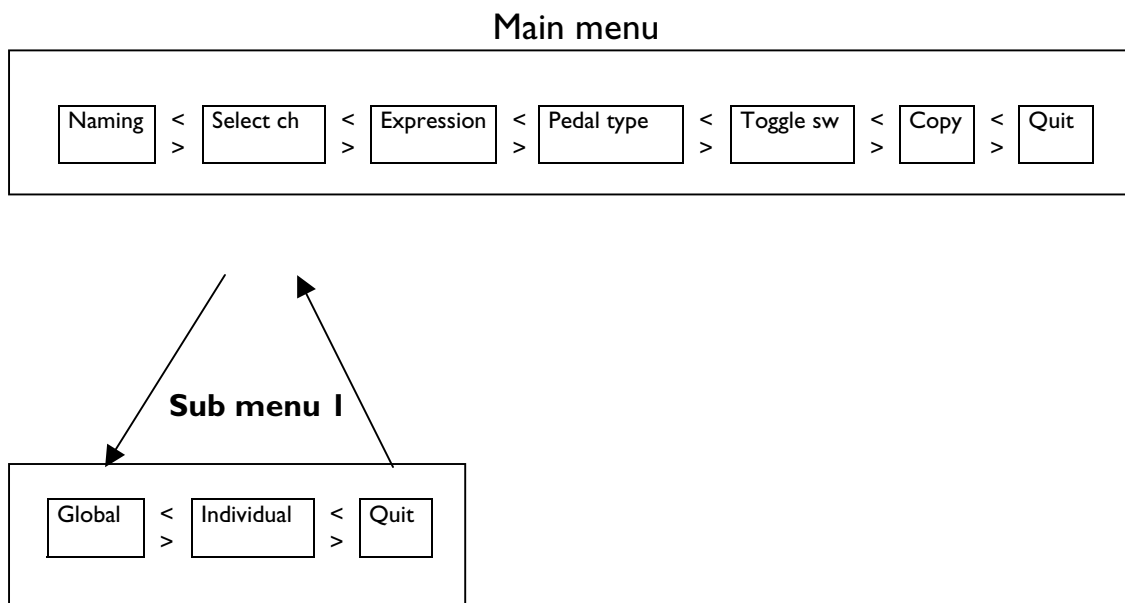
Menu structure

When activating the MENU button, the LED inside the button lights up and indicates that you have accessed the main menu. Using the arrow-buttons on the keyboard you can scroll among the program-options mentioned below, and select any option by pressing the menu button.

If one of the menus “SELECT CH” or “TOGGLE SW” are chosen with the MENU-button, you will enter different sub-menus which you are able to scroll among using the arrow-buttons. To end the submenu-session, scroll to “QUIT” and press the MENU-button. This will take you back to the main menu.

If you wish to leave the main menu press “QUIT” again.

See below for “SELECT CH” menu structure schematics.



ex.1

How to program BIG FOOT

.....

Using the keyboard in the upper right corner does all programming. When turned on, the device automatically starts up on program no. 1. You can easily form a general view of the different menus by pressing the yellow MENU-button in the center of the keyboard. Subsequently you can flick through the menus by using the >,< -buttons.

NAMING PRESETS

Press the yellow MENU-button centered in the keyboard. (The control-LED in the button will light up.) It will say NAMING in the display. Press again on the MENU-button. A small horizontal cursor flashes in the lower left corner of the display. Using the UP/DOWN switches you can choose characters A thru Z or 0 thru 9. Once the desired character is chosen, move the cursor to the right using the >-button and choose the next character. When the desired title has been entered, press the MENU-button. It will say NAMING in the display. To exit the menu press the <-button. It will say QUIT in the display, finish the NAMING-session by pressing the MENU-button again.

CHOOSING MIDI CHANNELS:

MIDI-communication consists of up to 16 MIDI channels. Each channel holds 127 presets. Most choose to send on MIDI-channel no. 1. However BIG FOOT can be programmed to allow for the assignment of multiple MIDI-channels.

GLOBAL SETUP:

Press the MENU-button and scroll to SELECT CH. using the >-button. Press the MENU-button again and it will say "GLOBAL" in the display. Press the MENU-button and the display now reads "CH1". Scroll through the channels using the UP/DOWN buttons and choose the desired channel by pressing the MENU-button. To end the session choose QUIT in the submenu and subsequently choose QUIT in the main menu.

INDIVIDUAL SETUP:

Press the MENU-button and scroll to SELECT CH. using the >-button. Press the MENU-button again and it will say GLOBAL in the display. Scroll to INDIVIDUAL using the >-button and press the MENU-button. It will say: CH.1-----PR. 1 in the display. Choose channel number using the UP/DOWN buttons and program number using the >,< buttons. To end the session choose QUIT in the submenu and subsequently choose QUIT in the main menu.

How to program BIG FOOT (continued)

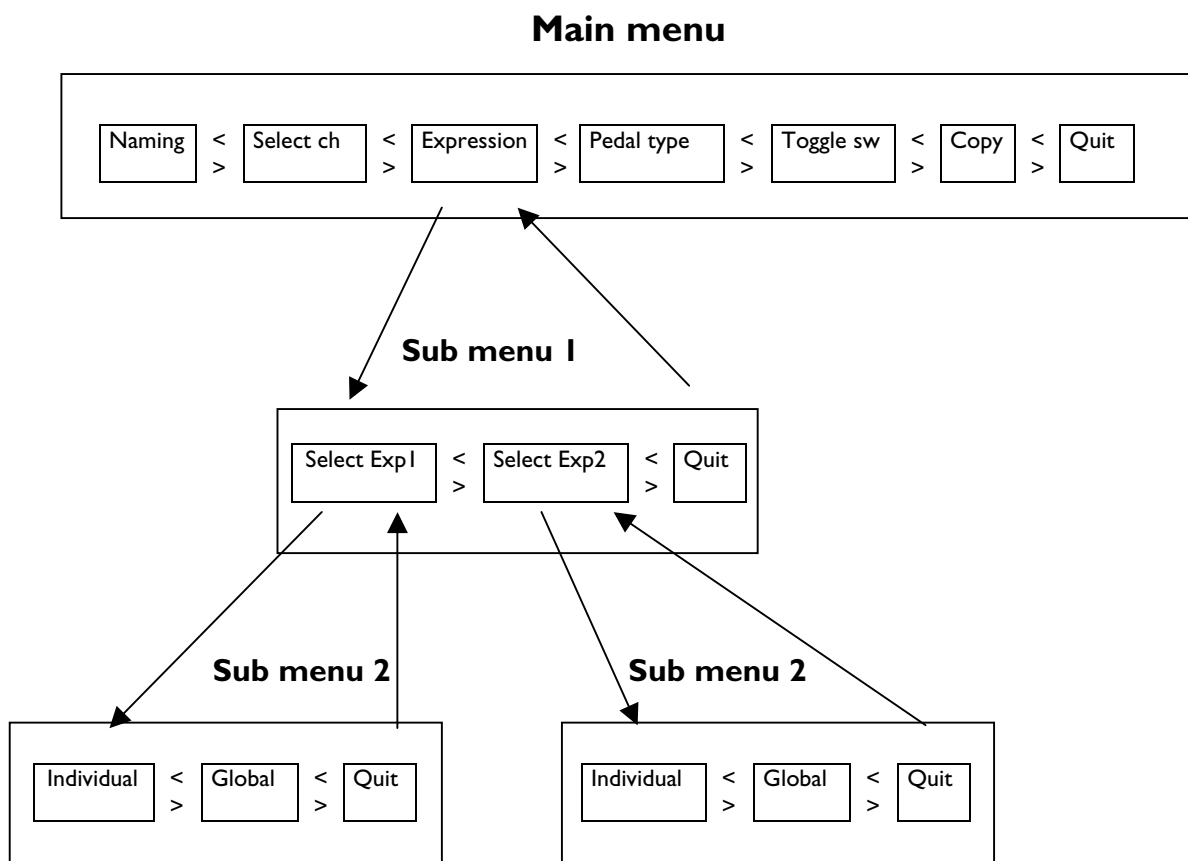
CONNECTING VOLUME AND EXPRESSION PEDALS:

BIG FOOT allows for the connection of three expression-pedals. A pedal connected to the VOLUME#7 inlet solely controls the volume.

The other Expression pedal inlets can be configured to control an eligible MIDI-control number. A MIDI-control number is a command that controls sound parameters real-time in an effects processor. There are 127 MIDI-control numbers to choose from in the BIG FOOT.

There are 2 ways to program the expression pedals.

Example 2 shows the Expression submenu structure.



ex. 2

How to program BIG FOOT (continued)

EXPRESSION PEDAL SETUP:

Press the MENU-button and scroll to EXPRESSION. using the >-button. Press the MENU-button again. You are now in submenu 1. Choose which expression-pedal inlet you wish to program, and press the MENU-button. You are now in submenu 2.

GLOBAL SETUP:

Use the UP/DOWN buttons to scroll through the MIDI control numbers and choose the desired number by pressing the MENU-button. You are now in submenu 2 and if you want to end programming mode, press QUIT three times.

INDIVIDUAL SETUP:

Use the ><-buttons to find the preset number you wish to change. Use the UP/DOWN buttons to scroll through the actual control numbers. When control numbers for each preset have been chosen and you wish to leave programming mode, press QUIT three times.

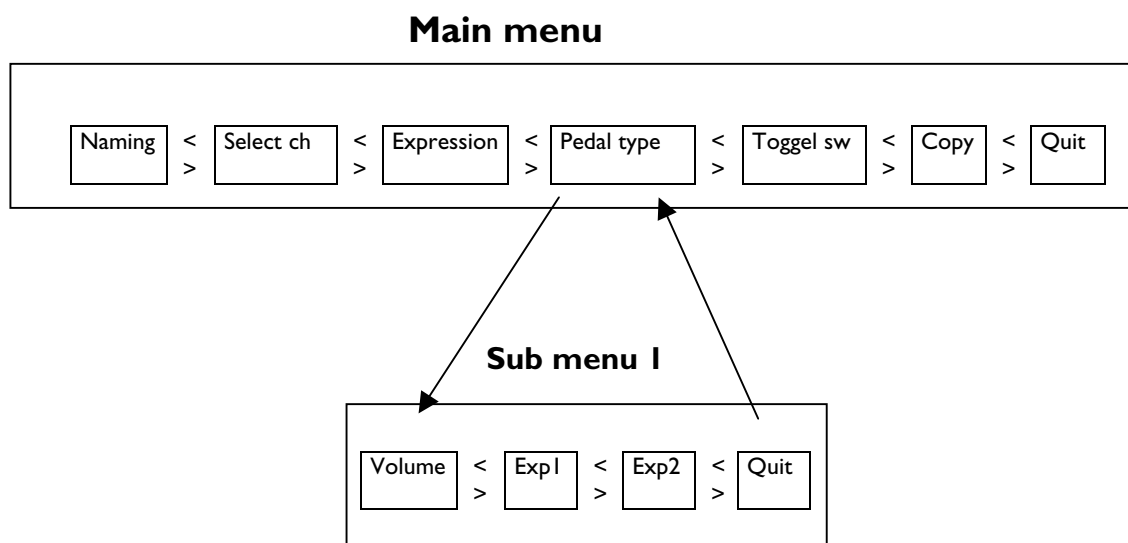
SETTING UP PEDAL TYPES:

There are 2 types of volume pedals, linear and logarithmic.

The linear type is considered to be the correct one to use as an expression pedal and is preferred by most (T-rex Engineering recommends using the Roland FV-200).

However for those who prefer using the logarithmic pedal-type (Earnie ball), this menu has been made.

As displayed in example 3, a submenu exists for every expression inlet.



ex. 3

How to program BIG FOOT (continued)

Choose the expression inlet you wish to change from linear to logarithmic.
Press the MENU-button to choose the submenu. The display now reads "LINEAR" in the right side. Use the ><-buttons to change the type from "LINEAR" to "LOG"
End the session by choosing QUIT in the submenu and subsequently choosing QUIT in the main menu.

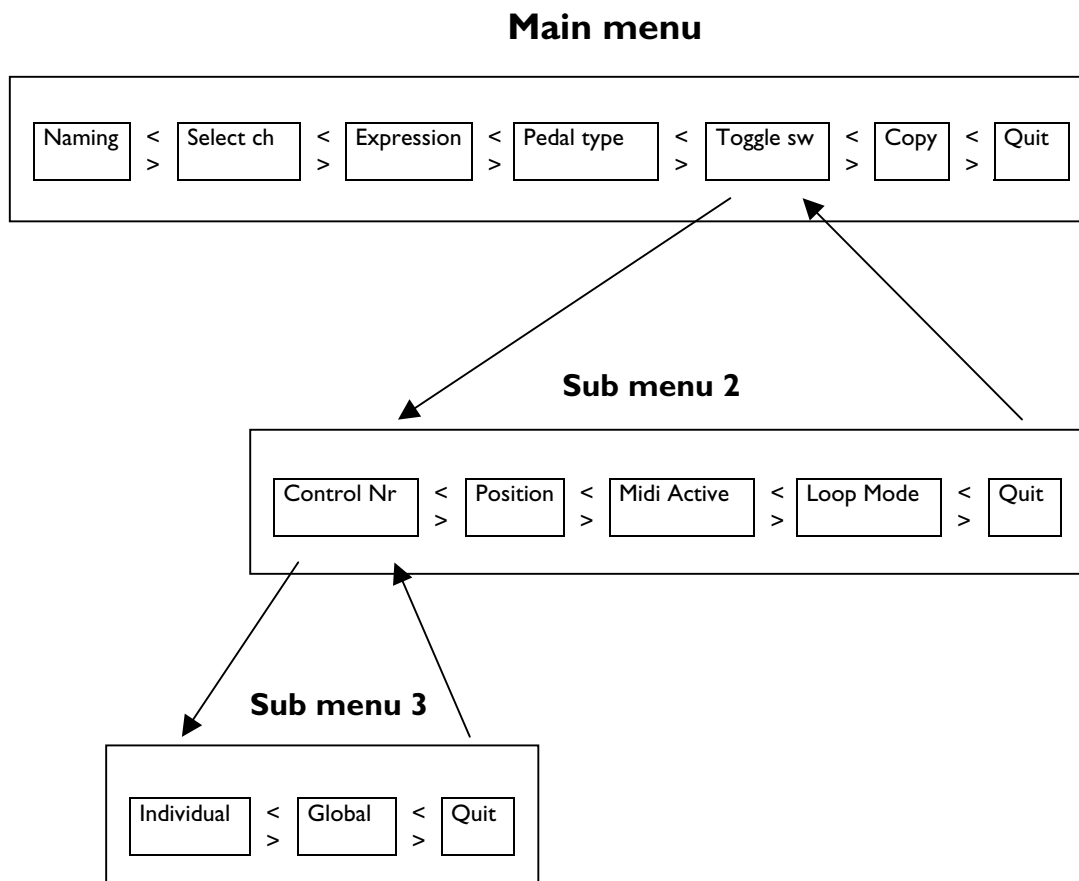
How to program the toggle switches

BIG FOOT contains 6 toggle switches.

They can all be used to control functions like tap delay, mute, boost and effects on/off etc. in your effects unit. Every switch is assignable to whichever control number that is required by your effects unit.

The default setting is control numbers 20 thru 25.

BIG FOOT also allows for programming the position of the toggle switches so you e.g. won't have to press twice to turn off an effects block.



How to program the toggle switches (continued)

SETTING UP CONTROL NUMBERS:

There are 2 ways to set up the control numbers for the switches

In the submenu "GLOBAL" (see above), the control numbers for every switch are set in all 120 presets overall.

In the submenu "INDIVIDUAL" (see above), the control numbers for every switch are only set up in the chosen preset.

GLOBAL SETUP:

Press the MENU-button and scroll to TOGGEL SW using the >-button. Press the MENU-button again and it will say CONTROL NR. in the display. Press MENU again and it will "INDIVIDUAL" in the display. Scroll to submenu "GLOBAL" using the >, < buttons and press the MENU-button. It will say SW I-----CTRL NR 20 in the display. Choose switch number using the UP/DOWN buttons, and control number using the >< buttons.

End the session by choosing QUIT in the submenu and subsequently choosing QUIT in the main menu.

INDIVIDUAL SETUP:

Press the MENU-button and scroll to TOGGEL SW using the >-button. Press the MENU-button again and it will say CONTROL NR. in the display. Press MENU again and it will "INDIVIDUAL" in the display.

Press MENU again and it will say CTNR 20-----PR I and the CTL I switch is indicated as being ON. You have to activate the CTL switch you wish to program, by pressing the actual switch.

To change the control number, use the >,< buttons and to change preset number, use the UP/DOWN buttons.

End the session by pressing the MENU-button and choose QUIT in the submenus and subsequently choosing QUIT in the main menu.

SETTING UP TOGGLE SWITCH POSITIONS:

Press the MENU-button and scroll to TOGGEL SW using the >-button. Press the MENU-button again and it will say CONTROL NR. in the display. Press >- and scroll to POSITION. Press MENU again and it will say POSITION ----- PR.I in the display.

Use the UP/DOWN buttons to choose the program number where the switches are to be positioned.

When the desired program number flashes in the right side of the display, activate the control switches you want to be turned on. The LED above each active control switch indicates the ON/OFF status of the assigned effects block.

Press the MENU-button to exit. To end the session choose QUIT in the submenu and subsequently choose QUIT in the main menu

How to program the toggle switches (continued)

SETTING UP MIDI ACTIVE

In this menu, the CTL switches can be made “MIDI active”. This means that by every preset change, the control number and value of the toggle switches is also sent out. Every switch can be programmed individually to work as normal or MIDI active.

Press the MENU-button and scroll to TOGGEL SW using the >-button. Press the MENU-button again and it will say CONTROL NR. in the display. Scroll to submenu “MIDI ACTIVE” using the >, < buttons and press the MENU-button. It will say SW I-----NORMAL in the display. Choose switch number using the UP/DOWN buttons, and NORMAL/MIDI active mode using the >< buttons.

End the session by choosing QUIT in the submenu and subsequently choosing QUIT in the main menu.

SETTING UP LOOP MODE

In this menu the CTL switches can be reprogrammed to control loops in the MACI real-time. Every switch can be programmed to ON/OFF control loop 1 thru 8, SW A or SW B.

The LED above each switch will indicate the ON/OFF status of the loop, and is updated by the MACI every time a new preset command is sent.

This feature only works with a fully mounted MIDI cable.

Press the MENU-button and scroll to TOGGEL SW using the >-button. Press the MENU-button again and it will say CONTROL NR. in the display. Scroll to submenu “LOOP MODE” using the >, < buttons and press the MENU-button. It will say SW I-----NORMAL in the display. Choose switch number using the UP/DOWN buttons, and use the >< buttons to determine which loop the chosen switch should control.

End the session by choosing QUIT in the submenu and subsequently choosing QUIT in the main menu.

Copying presets

To make programming as easy for you as possible, the BIGFOOT has a copy-preset function, which enables you to copy data from one preset to another. This feature is situated in the main menu.

Press the MENU-button and scroll to COPY using the >-button. Press the MENU-button again and it will say FROM I-----TO I in the display.

Use the UP/DOWN buttons to choose from which preset should be copied.

Use the >< buttons to determine to which preset should be copied. To execute command press the BANK OP switch, and it will say “OK” in the display

Press the MENU-button to exit. To end the session choose QUIT in the submenu and subsequently choose QUIT in the main menu

Technical Specifications

Inputs/outputs:	MIDI out Volume #7 Expression CTLI
Controls	Program switches (1 thru 10) Bank switches (UP/DOWN) Control switches (1 thru 6) From MIDI-board to LOOP-board (Change) Programming keyboard (UP/DOWN, <-,> og MENU-button) On/off switch
Display:	13 segments, 16 characters.
Indicators:	LED 1-10 MIDI-board LED 1-6 CTL LED MENU-button
Power supply:	230 V AC 8 Watt.

EMC

Agreement declaration complies with EMC-directive.

Manufacturer: T-Rex Engineering Aps
Ibaek Strandvej 3A
DK-7100 Vejle
Phone. +45 75 72 71 81/+45 40 98 78 48
Fax: +45 75 72 71 98
Email: t-rex@t-rex-eng.com
Web: www.t-rex-eng.com

Mobile agreement declaration complies with EMC-directive 89/336/EØF.

Product: BIG FOOT MIDI-controller
Usage: Used for controlling MIDI-commands
Complies with: EN50081-1, EN50082-1
Case-number: S960971 reference: Jyske EMC Lab.

Vejle d. 18/9-96

Issued in Vejle January 23th 2004



Lars Dahl-Jørgensen
Managing Director



Sebastian Jensen
Managing Director